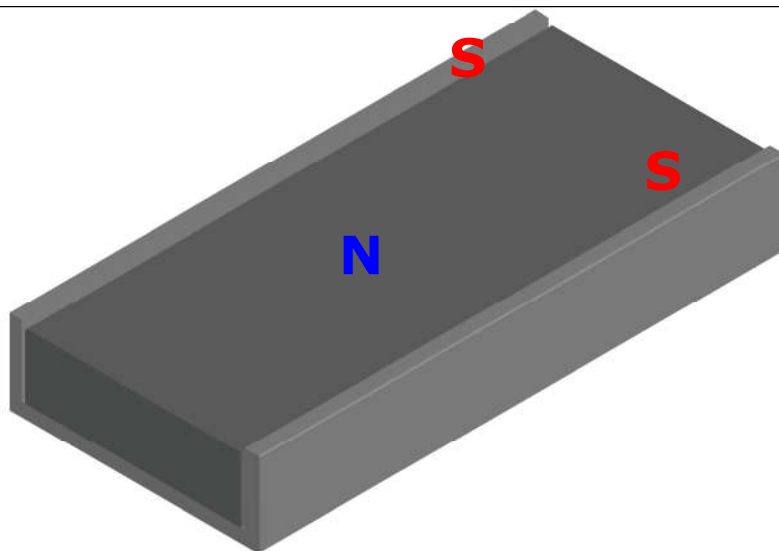
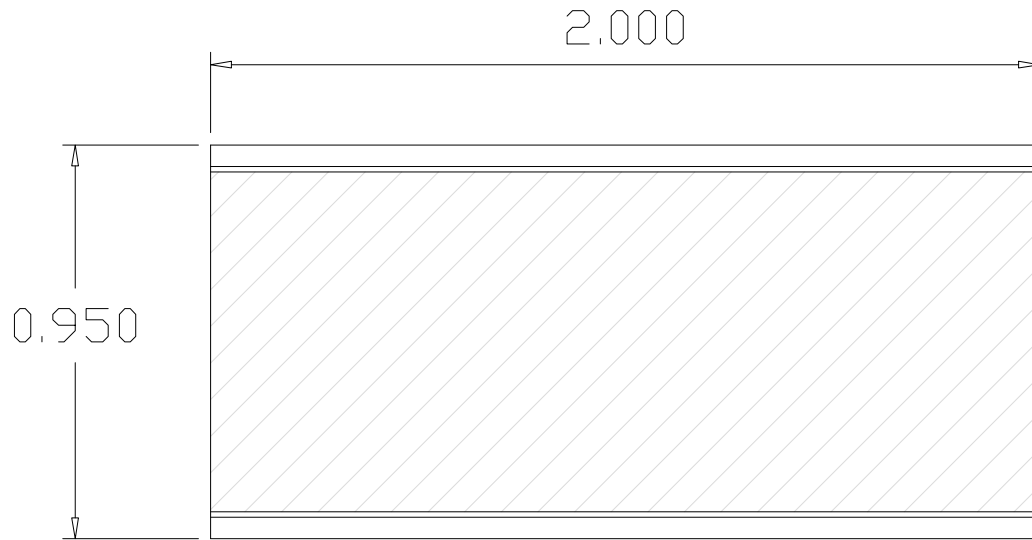
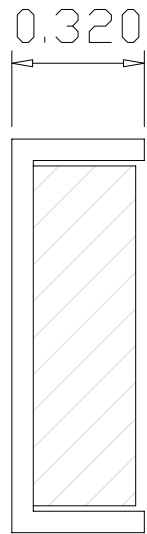


65CB0005

Revision 3



Specifications:

- 1) Flexible magnet
- 2) Nickel plated C.R. steel channel
- 3) Magnet and channel are glued.
- 4) Pull pounds: 14 lbs typical. (Tested on a clean, ground steel plate 0.375" thick)
- 5) Working temperature range: -40°C~100°C
- 6) All dimensions are inches