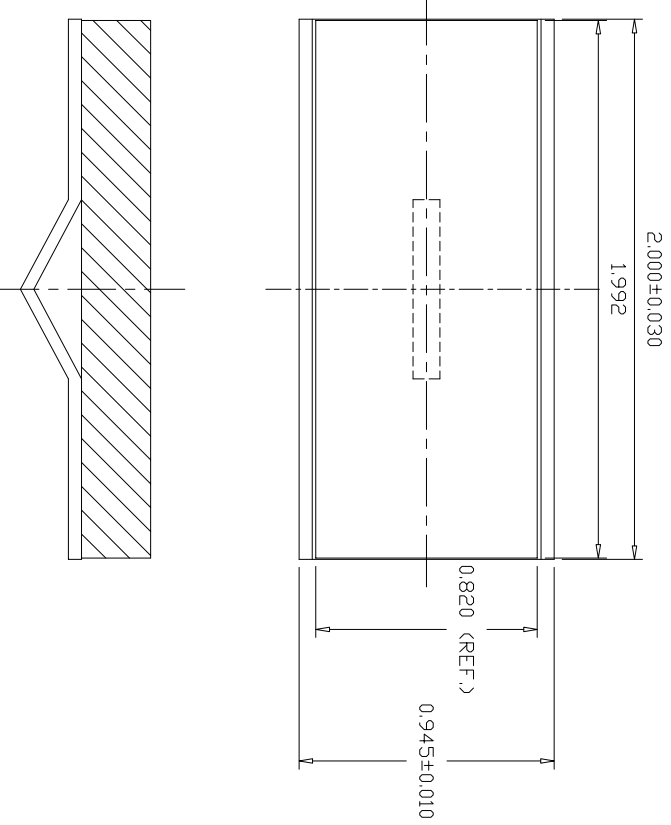
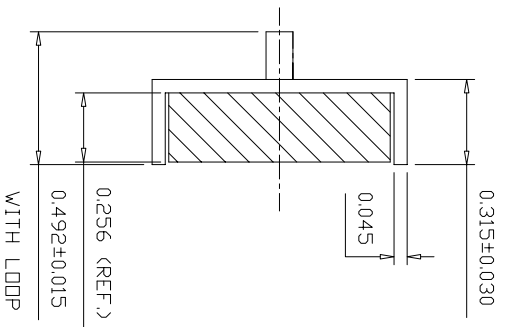


65CB0003

THE INFORMATION CONTAINED IN THIS DRAWING IS THE SOLE PROPERTY OF ADAMS MAGNETIC PRODUCTS ANY PRODUCTION IN PART OR WHOLE WITHOUT THE WRITTEN PERMISSION OF ADAMS MAGNETIC PRODUCTS IS PROHIBITED

REVISIONS				
CHANGE NO.	REV	DESCRIPTION	DATE	APPROVED
2013-01-108	1	NICKEL PLATING ADDED	06/24/13	WER
2016-01-016	2	Corrected Material	06/15/16	WER



SPECIFICATIONS

- A Removal of all burrs, sharp edges
- B Supply magnetized
- C Pull: 14 lbs min.
- D Nickel plating
- E

TOLERANCES UNLESS OTHERWISE SPECIFIED

DECIMAL: 2 PLACES+/-0.015 3 PLACES+/-0.005	ALL EDGES BROKEN 0.025 MAX	ANGLES: +/-	Unit: INCH
--	-------------------------------	-------------	------------



PRODUCT DESCRIPTION:
CH-10-2 CHANNEL
MATERIAL:
C.R. Steel Cup, w/1.6MgDe Flexible Magnet

DATE DRAWN 06-02-11	CHECKED BY	PART NO. 65CB0003	REV 2
DRAWN BY A.J.	DATE OF ISSUE	SCALE	
		NDT TO SCALE	SHEET 1/1