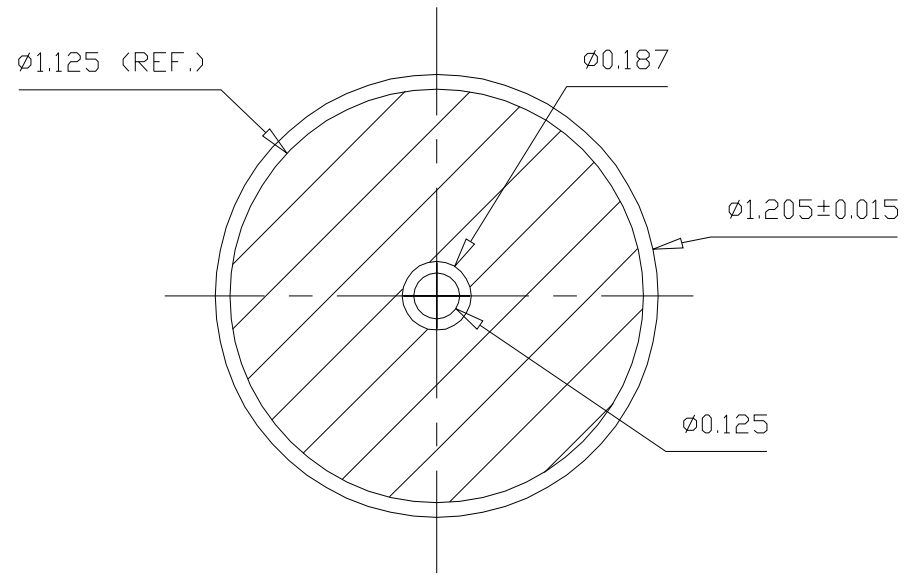
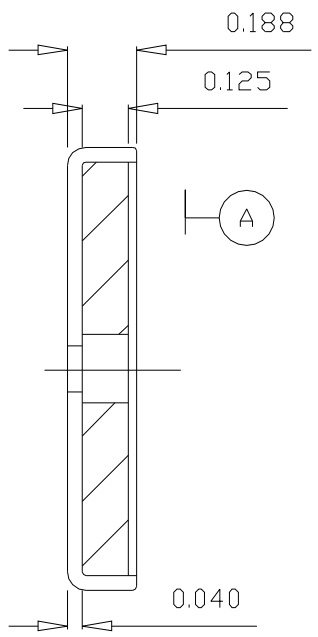


64A0001



REVISIONS				
CHANGE NO.	REV	DESCRIPTION	DATE	APPROVED
2013-01-162	1	Ø1.125 REF. WAS ±0.005	10/08/13	WER



GENERAL NOTES

SPECIFICATION

A	Magnet surface lower than cup 0.005"
B	Steel cup finish: Ni coating
C	Pull of surface A not less than 5 lbs
D	Magnet is glued to the cup
E	Working temperature range: -40°C~80°C
F	Inside Radius .010 Max
G	.125 hole concentric to .010



PRODUCT DESCRIPTION	RB-20
MATERIAL	FLEXIBLE MAGNET
	C.R.STEEL CUP

TOLERANCES UNLESS OTHERWISE SPECIFIED

DATE DRAWN	10-05-07	CHECKED BY	
DRAWN BY	A.J.	DATED OF ISSUE	

PART NO.	64A0001	REV	1
SCALE	NOT TO SCALE	SHEET	1/1

DECIMAL: 2 PLACES+/-0.015 3 PLACES+/-0.005	ALL EDGES BROKEN 0.025 MAX	ANGLES: +/-	Unit: INCH
--	-------------------------------	-------------	------------

