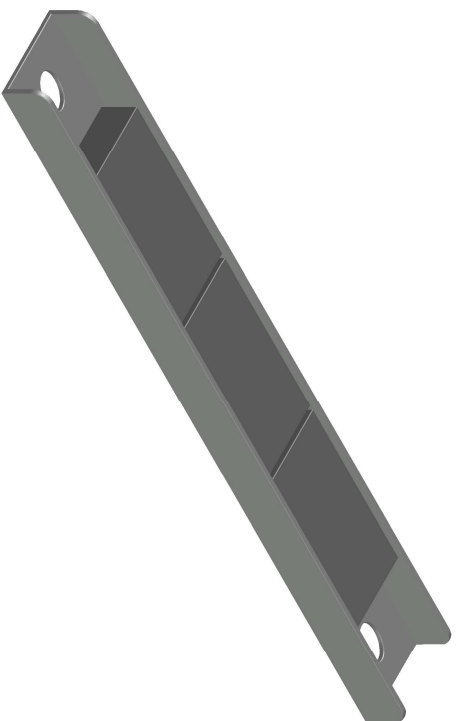
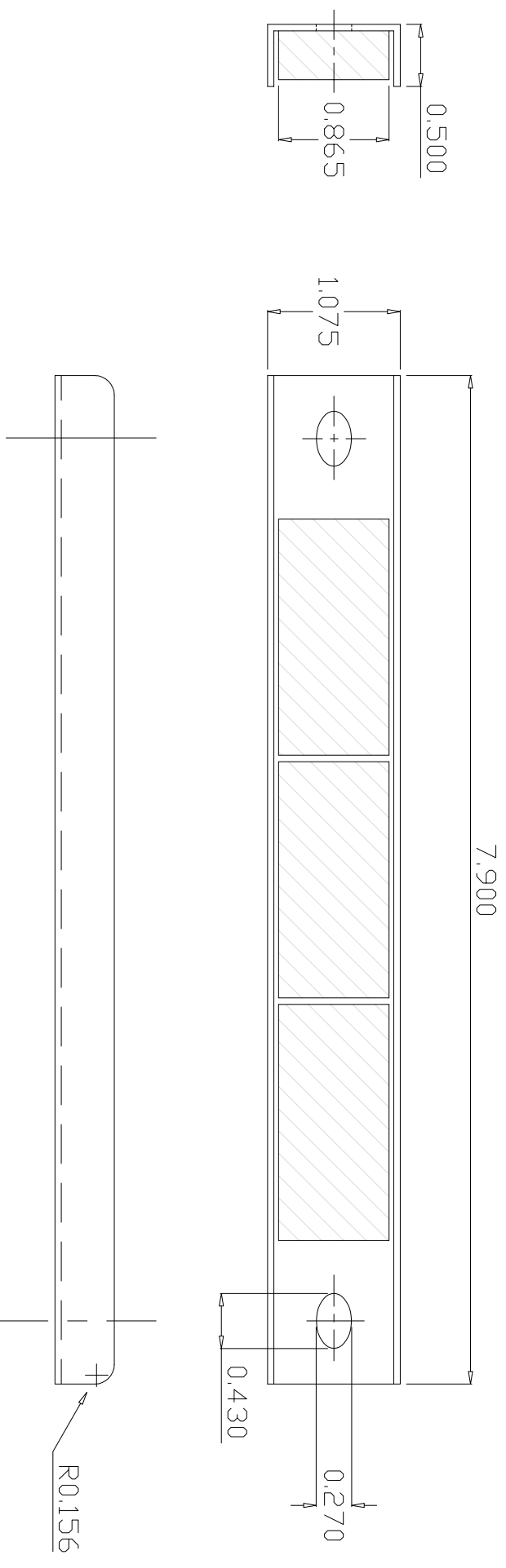


61N0002

Revision 2



Specifications:

- 1) Ceramic magnet
- 2) Pac Black(DuPont) powder plated c.r. steel channel
- 3) Magnet and channel are glued.
- 4) Pull pounds: 30 lbs typical. (Tested on a clean, ground steel plate 0.375" thick)
- 5) Working Temperature range: -40°C~100°C
- 6) All dimensions are inches